



因子のスクリープロット

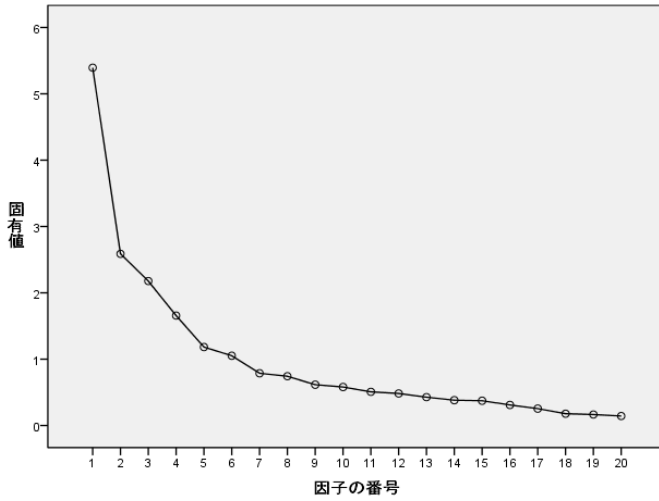
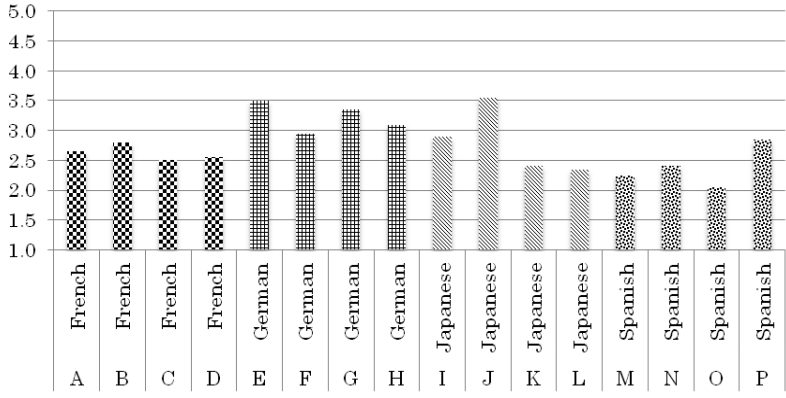


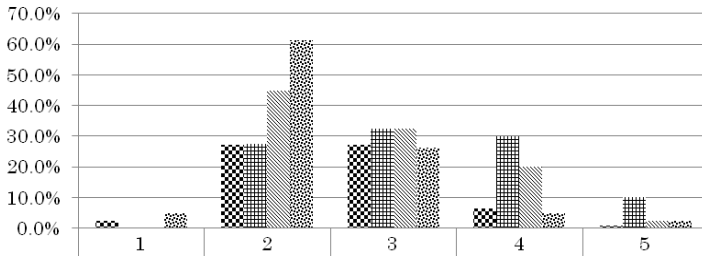
表 6 各教科書での Yes / No 疑問文への応答

教科書	学年	ページ	質問	応答
CB	1	38	Is this your bag?	Yes, it is. / <i>No, it isn't.</i>
NC	2	95	Is it Hashire Merosu?	Yes, it is. / <i>No, it is not [isn't].</i>
NC	1	24	Is that a fox?	Yes, it is. / <i>No, it is not [isn't].</i>
NC	2	94	Is the car washed every day?	Yes, it is. / <i>No, it is not [isn't].</i>
NH	1	22	Is that a fish market?	<i>No, it's not.</i> It's a restaurant.
NH	1	39	Is it easy?	Yes, it is. / <i>No, it's not.</i>
OW	1	27	Is that your racket?	<i>No, it isn't.</i> That's Bob's.
OW	1	31	Is it a cat?	<i>No, it isn't.</i>
SS	1	50	Is that your bag?	Yes, it is. / <i>No, it isn't.</i>
SS	1	113	Is that your bag?	Yes, it is. / <i>No, it isn't.</i>
SS	1	50	Is this your pencil?	Yes, it is. / <i>No, it isn't.</i>
SS	1	50	Is that your pencil, Ken?	Yes, it is. / <i>No, it isn't.</i>
TE	1	50	Is that a balloon?	<i>No, it isn't.</i> It's a Japanese lantern.
TE	3	12	Is English spoken in that country?	Yes, it is. / <i>No, it isn't.</i>

Average Intelligibility Score for each Evaluator

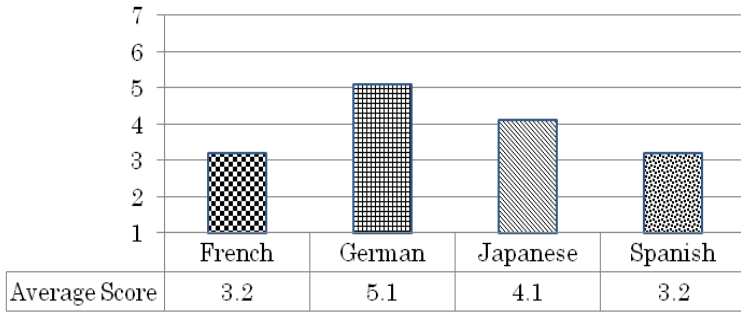


Distribution of Intelligibility Scores

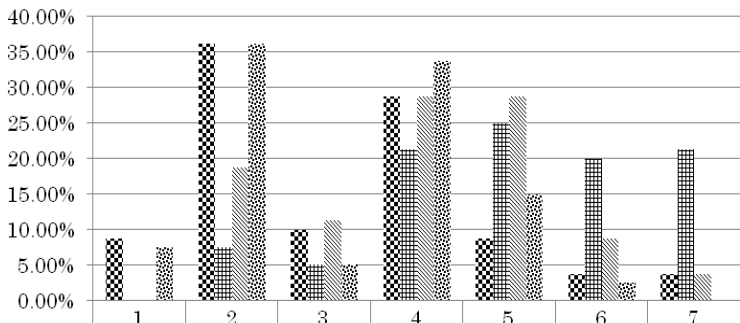


	1	2	3	4	5
⊗ French	2.4%	27.2%	27.2%	6.4%	0.8%
# German	0.0%	27.5%	32.5%	30.0%	10.0%
≡ Japanese	0.0%	45.0%	32.5%	20.0%	2.5%
* Spanish	5.0%	61.3%	26.3%	5.0%	2.5%

Accuracy - Overall Average Scores

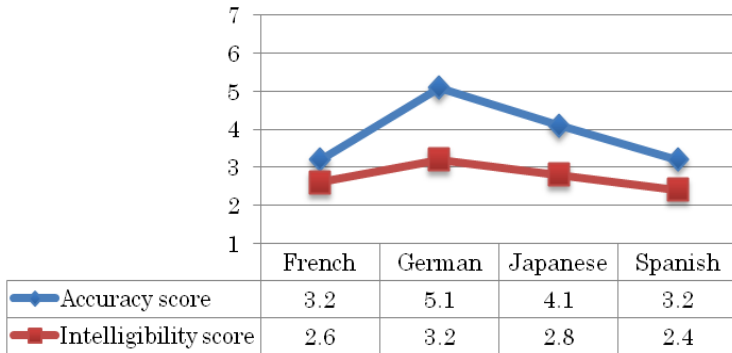


Distribution of Accuracy Scores



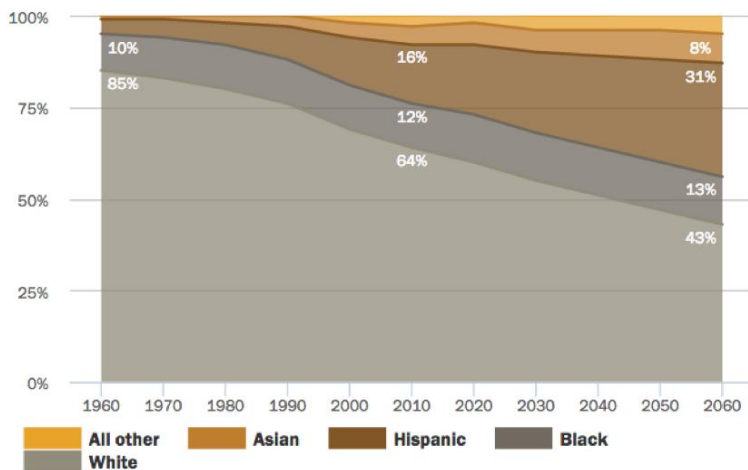
◆ French	8.75%	36.25%	10.00%	28.75%	8.75%	3.75%	3.75%
# German	0%	7.50%	5%	21.25%	25%	20%	21.25%
≡ Japanese	0%	18.75%	11.25%	28.75%	28.75%	8.75%	3.75%
* Spanish	7.50%	36.25%	5%	33.75%	15%	2.50%	0%

Comparison of Intelligibility and Accuracy Scores



Changing Face of America

Percent of total U.S. population by race and ethnicity, 1960-2060



Changing Face of America

	2010	2040	2050	2060
All other	3%	4%	5%	6%
Asian	5%	7%	8%	8%
Hispanic	16%	25%	28%	31%
Black	12%	13%	13%	13%
White	64%	51%	47%	43%

Pew Research Center, Paul Taylor, The NEXT America, April 10, 2014, "America's Racial Tapestry Is Changing"
 < <http://www.pewresearch.org/next-america/#Americas-Racial-Tapestry-Is-Changing> > 30 March 2015.



Figure 1: 'This Store Welcomes Shoplifters'
 (Reid, 1987)



Figure 2: 'Save Petrol Bum Cars'
 (Reid, 1987)

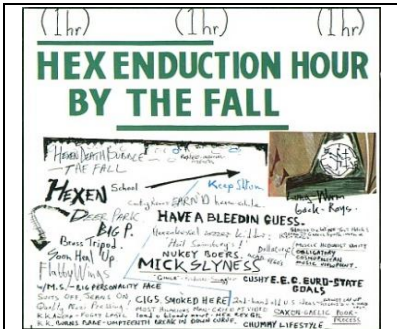


Figure 3: LP cover for The Fall's 'Hex Enduction Hour' (1982)

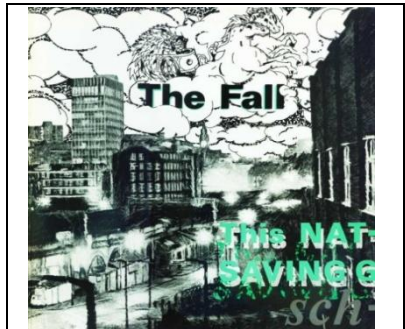


Figure 4: LP cover for The Fall's 'This Nation's Saving Grace' (1985)

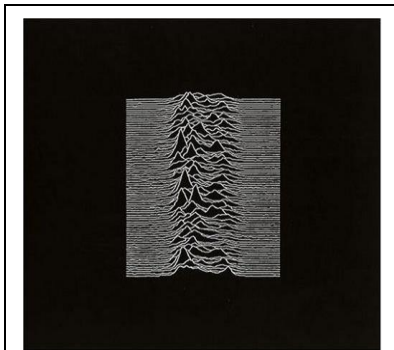


Figure 5: LP cover for Joy Division's 'Unknown Pleasures' (1979).

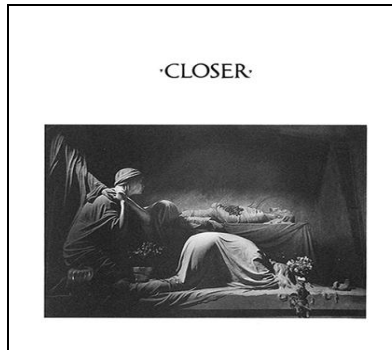


Figure 6: LP cover for Joy Division's 'Closer' (1980).

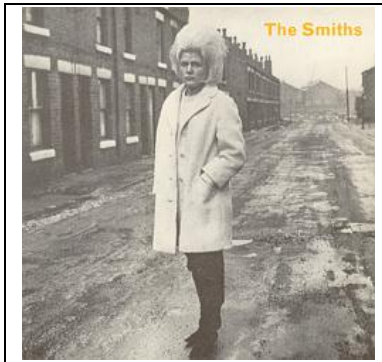


Figure 7: Cover for The Smiths's
'Heaven Knows I'm Miserable Now'
(1984)

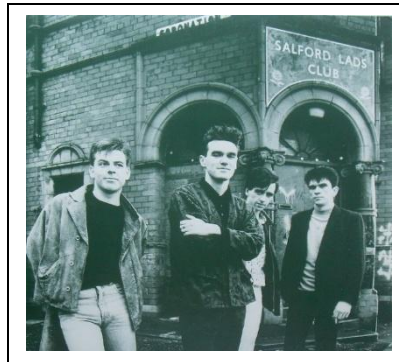


Figure 8: Photo for LP inlay in The
Smiths's 'The Queen Is Dead' (1986)